

DECRA QUBE INSTALLATION MANUAL

Top roof, safe home.



DECRA QUBE



| Length of Tile | Length of Cover | Width of Cover | Minimum Pitch |
|----------------|-----------------|----------------|---------------|
| 1305 mm | 1260 mm | 321 mm | 15° / 27% |

Storage

If stored outside, it should be kept in a sheltered place and a well-sealed waterproof cover must be placed over the DECRA QUBE roofing tiles and accessories to keep them dry and prevent damage.

Non-standard elements

When installing non-standard elements or gutters above the level of the roof, it is strongly recommended that materials that could cause corrosion (e.g. Cu, stainless steel...) are NOT used.

Roof traffic

When moving around the roof, avoid buckling the tiles by placing weight on the balls of the feet, directly over the batten, in the pans of tiles.

Cutting with a saw

When cutting tiles with a metal cutting saw (which has been approved by the producer), special (tipped) metal cutting blades should be used. Cutting should be performed with the coated surface facing downwards to reduce the amount of swarf adhering to the coating. Failure to do so will result in rust stains on the tile surface.

Wet surface

For safety reasons it is not recommended to walk or work on the roof when it is wet.

Battens

The recommended counter batten dimension is 50 x 80 mm.
The minimum counter batten height is 25 mm.

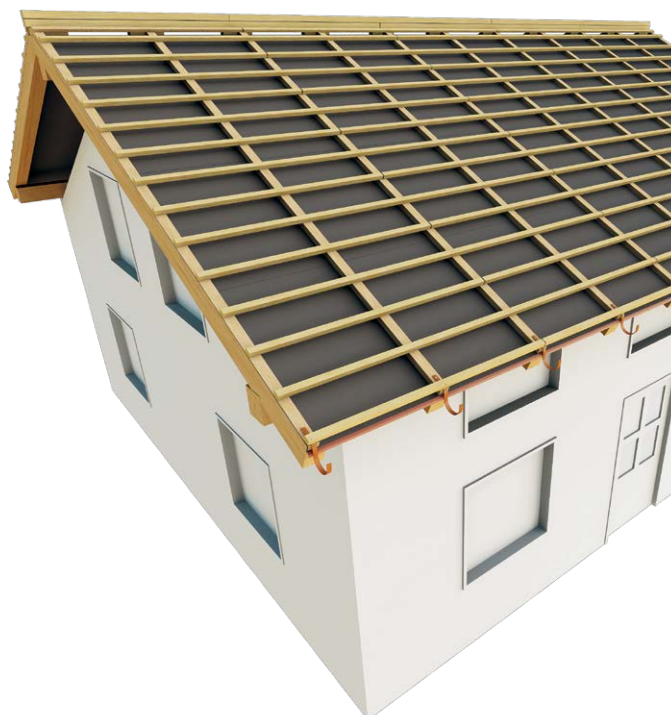
Tile batten size is 40 x 50 mm (distance between rafters less than 900 mm).

Local standards

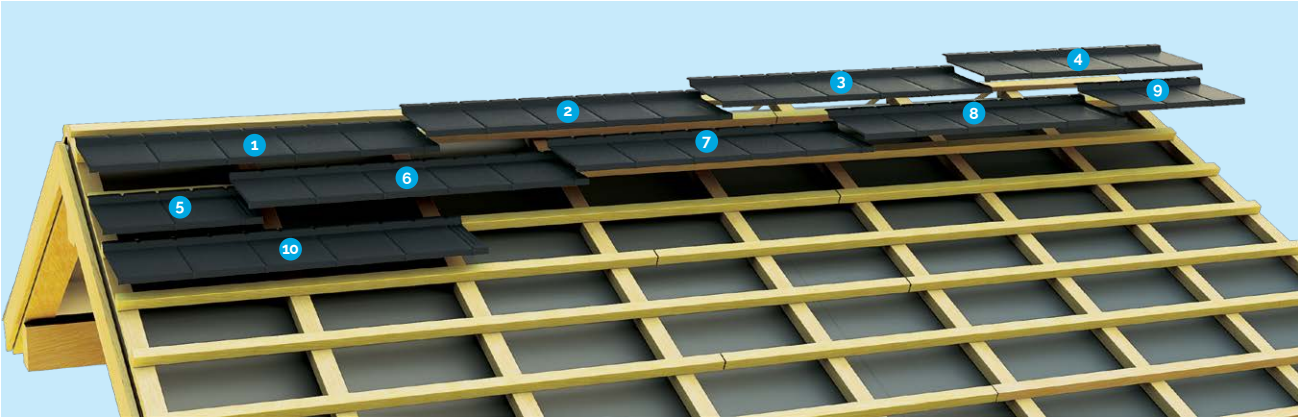
It is strongly recommended that local building standards and regulations are always followed and fully complied with.

Handling

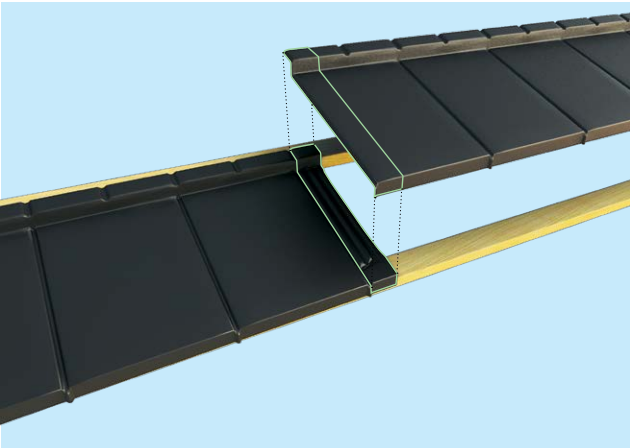
Care should be taken when handling the tiles to avoid damage to the surface. If minor damage does occur, the finishing kit should be used to repair it.



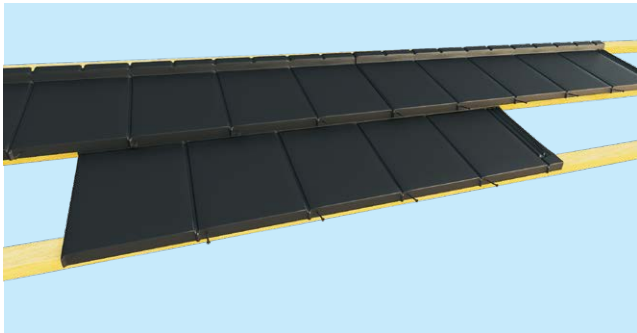
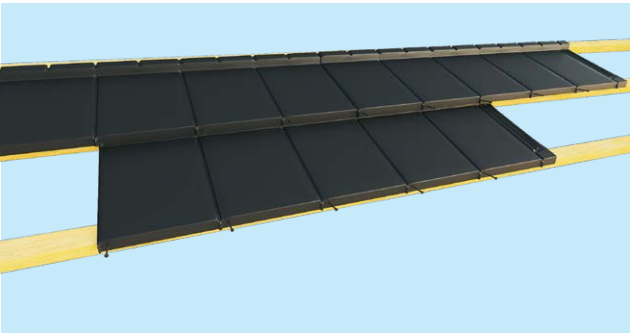
TILE LAYING



INTERLOCKING
OF THE TILES

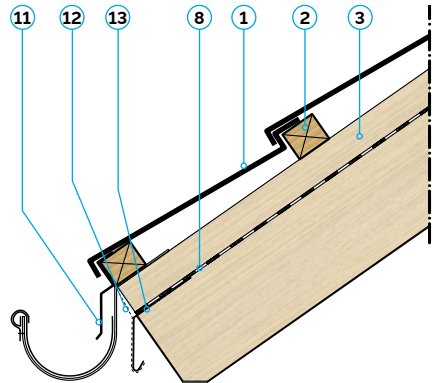
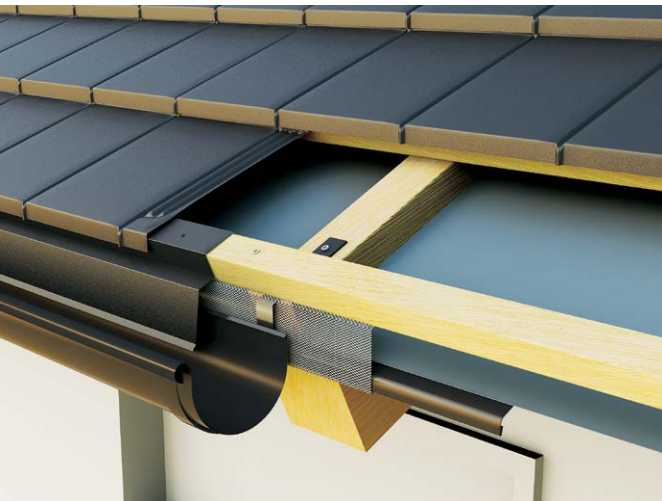


NAIL
POSITIONING



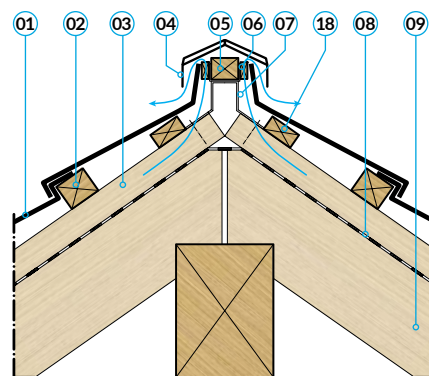
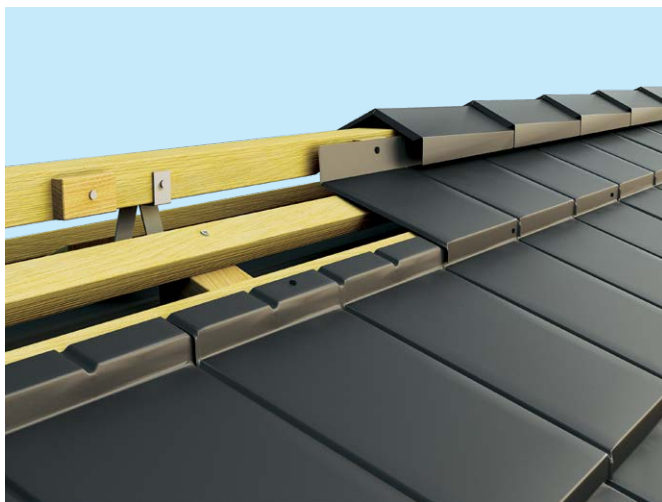
INSTALLATION DETAILS

EAVES FLASHING



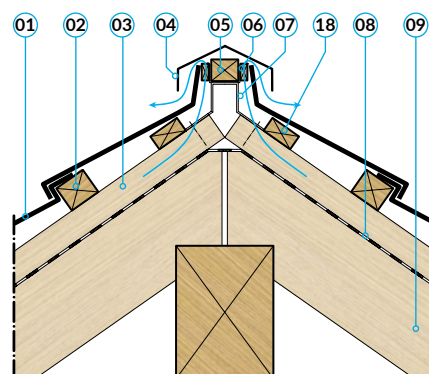
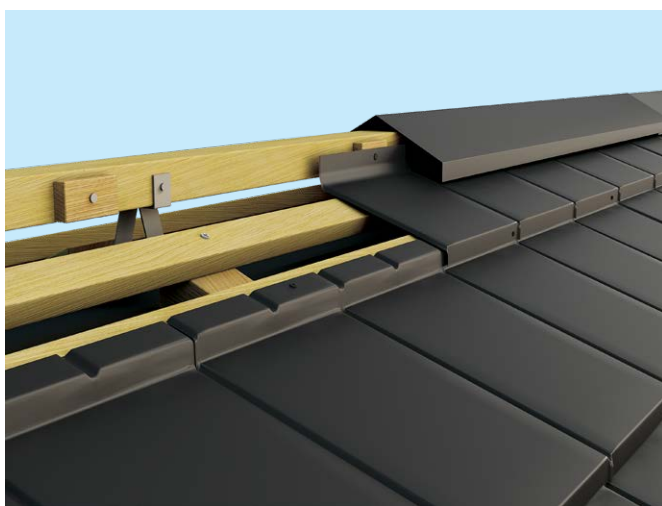
- | | | | |
|----|--------------------------|----|----------------------|
| 01 | DECRA OUBE | 11 | Sloping base |
| 02 | Tile Batten | 12 | Mesh |
| 03 | Ventilation Space Batten | 13 | Eaves Guard Flashing |
| 08 | Underlay | | |

RIDGE (BARELLS)



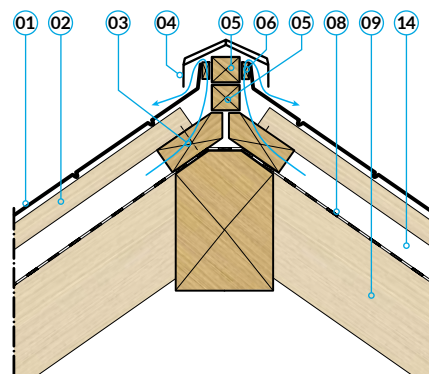
- | | |
|-----------------------------|---------------------------|
| 01 DECRA QUBE | 06 Spacer |
| 02 Tile Batten | 07 Ridge Bracket |
| 03 Ventilation Space Batten | 08 Underlay |
| 04 Angle Trim | 09 Rafter |
| 05 Ridge Batten | 18 Thinner Support Batten |

RIDGE (RIDGE COVER 130 OR RIDGE COVER 180)



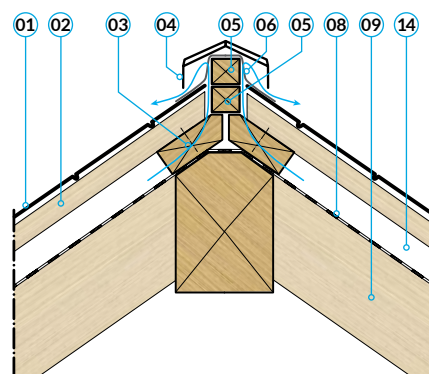
- | | |
|-----------------------------|---------------------------|
| 01 DECRA QUBE | 06 Spacer |
| 02 Tile Batten | 07 Ridge Bracket |
| 03 Ventilation Space Batten | 08 Underlay |
| 04 Long V Ridge | 09 Rafter |
| 05 Ridge Batten | 18 Thinner Support Batten |

HIP (SPACERS)



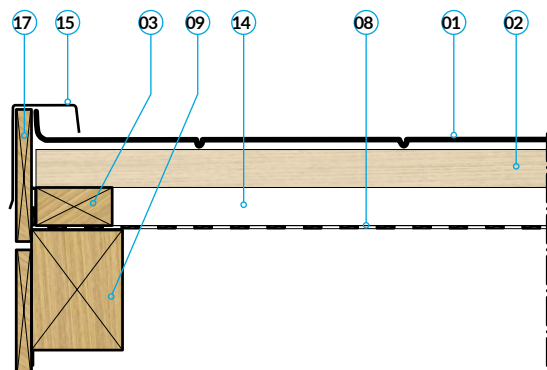
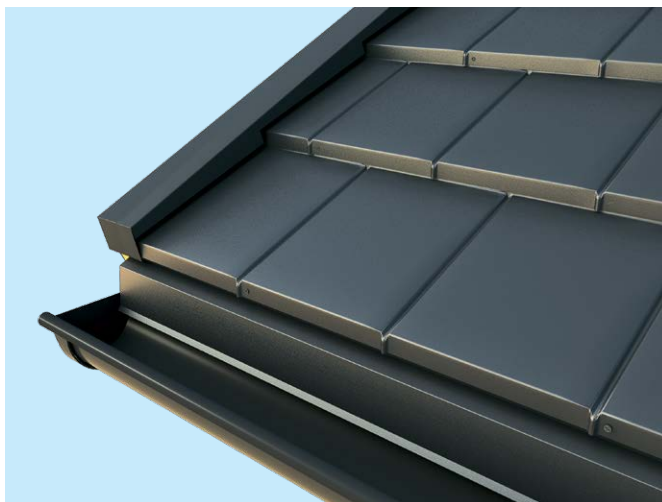
- | | |
|-----------------------------|----------------------|
| 01 DECRA QUBE | 06 Spacer |
| 02 Tile Batten | 08 Underlay |
| 03 Ventilation Space Batten | 09 Rafter |
| 04 Angle Trim | 14 Ventilation Space |
| 05 Ridge Batten | |

HIP (RIDGE ROLL)



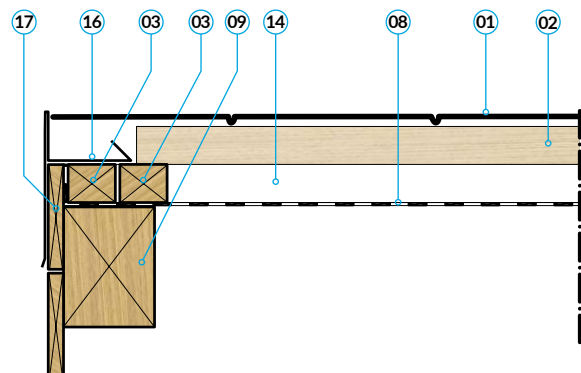
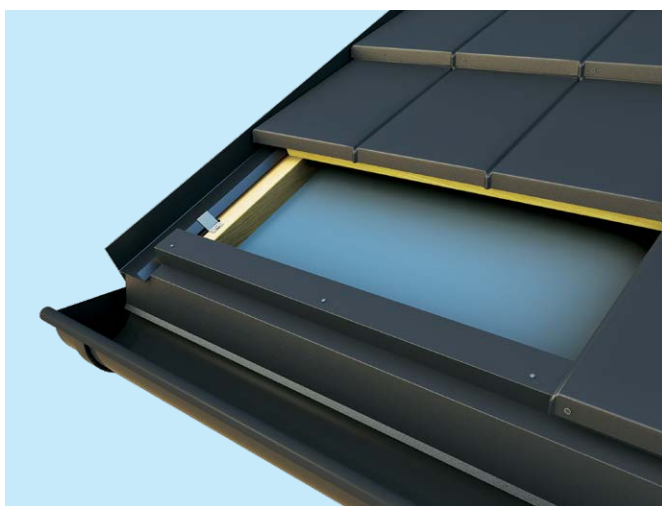
- | | |
|-----------------------------|----------------------|
| 01 DECRA QUBE | 06 Ridge Roll |
| 02 Tile Batten | 08 Underlay |
| 03 Ventilation Space Batten | 09 Rafter |
| 04 Angle Trim | 14 Ventilation Space |
| 05 Ridge Batten | |

GABLE
(SCRIBED RIDGE ELEMENT)



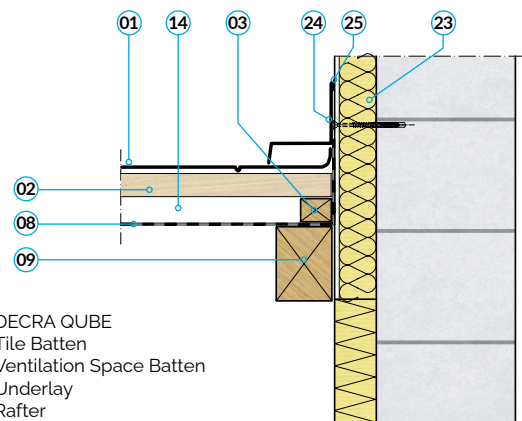
- | | |
|-----------------------------|----------------------|
| 01 DECRA QUBE | 09 Rafter |
| 02 Tile Batten | 14 Ventilation Space |
| 03 Ventilation Space Batten | 15 Scribed Flashing |
| 08 Underlay | 17 Barge Board |

GABLE
(BARGE FLASHING WITH WATER CHANNEL)



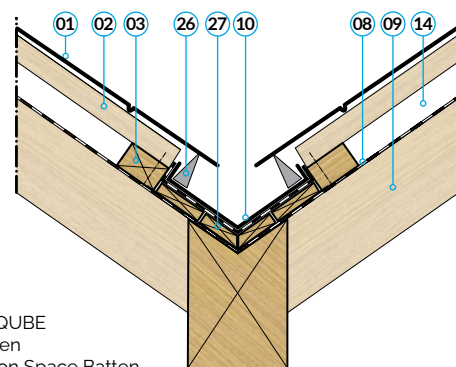
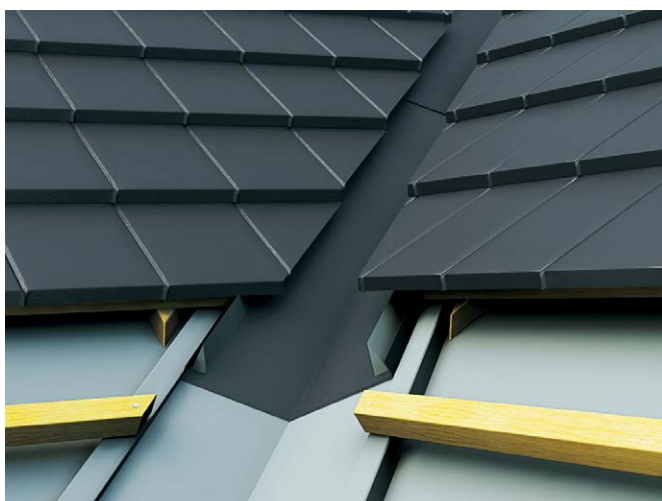
- | | |
|-----------------------------|---------------------------------------|
| 01 DECRA QUBE | 09 Rafter |
| 02 Tile Batten | 14 Ventilation Space |
| 03 Ventilation Space Batten | 16 Long Barge Board Cover Countersunk |
| 08 Underlay | 17 Barge Board |

WALL FLASHING



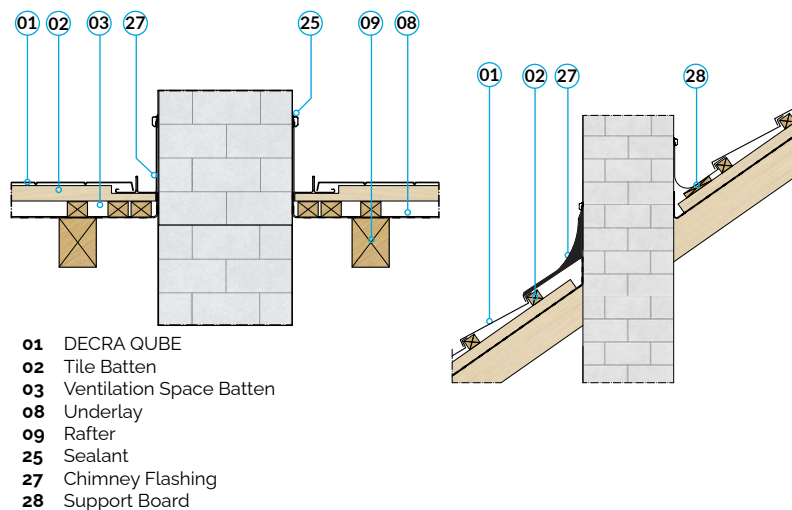
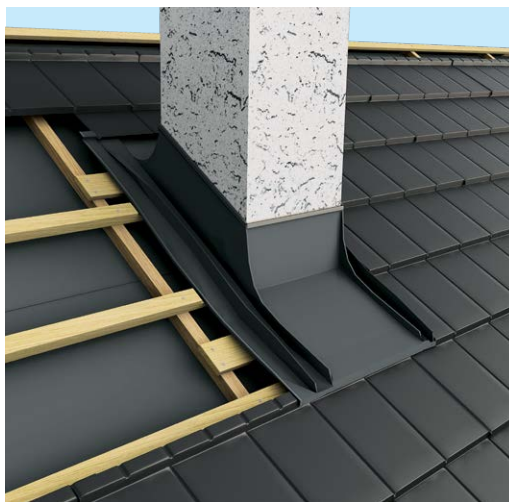
- | | |
|--------------------------------|-------------------------------|
| 01 DECRA QUBE | 24 Side Wall Starter Flashing |
| 02 Tile Batten | 25 Sealant |
| 03 Ventilation Space Batten | |
| 08 Underlay | |
| 09 Rafter | |
| 14 Ventilation Space | |
| 21 Flashing with Water Channel | |
| 22 Side Flashing | |
| 23 Warmth Insulation | |

VALLEY

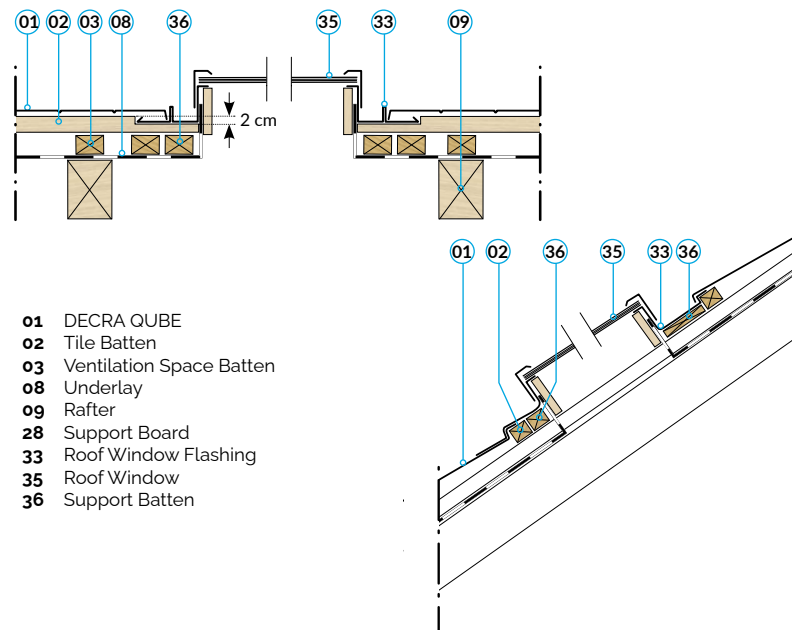
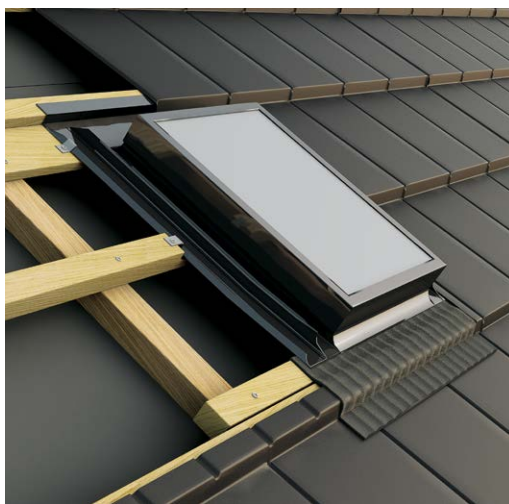


- | |
|-----------------------------|
| 01 DECRA QUBE |
| 02 Tile Batten |
| 03 Ventilation Space Batten |
| 08 Underlay |
| 09 Rafter |
| 10 Valley |
| 14 Ventilation Space |
| 26 Valley Sealing Foam |
| 27 Support Board |

CHIMNEY FLASHING



ROOF WINDOW



ACCESSORIES



ANGLE TRIM

Length of cover: 380 mm



RIDGE COVER 130

Length of cover: 1250 mm



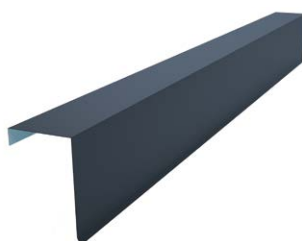
RIDGE COVER 180

Length of cover: 1250 mm



MONO-PITCHED RIDGE

Length of cover: 1250 mm



STANDARD BOX BARGE

Length of cover: 1250 mm



LONG BARGE BOARD COVER COUNTERSUNK

Length of cover: 1250 mm



LARGE SUB-RIDGE

Length of cover: 1300 mm



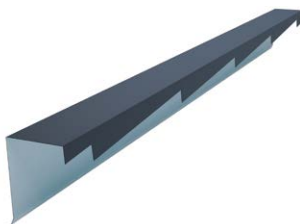
SMALL SUB-RIDGE

Length of cover: 1250 mm



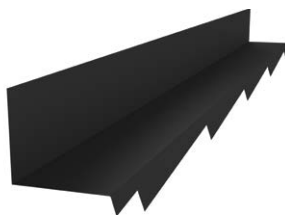
MINI SUB-RIDGE

Length of cover: 1250 mm



FLASHING (LEFT OR RIGHT)

Length of cover: 1284 mm



SIDE WALL FLASHING SCRIBED (LEFT OR RIGHT)

Length of cover: 1284 mm



SLOPING BASE/MOUNTING

Length of cover: 1250 mm



VALLEY GUTTER

Length of cover: 1300 mm



ROOF VENT FLANGE PLUMBING

Pipe cross-section: 150 x 150 mm



ROOF VENTILATION ELEMENT

Free ventilation area: 75 cm²



SNOW-STOPPER

Steel, powder coated



NAILS ON A REEL

200 pcs/coil (2,8 x 50 mm)



TOUCH-UP PEN

12 ml

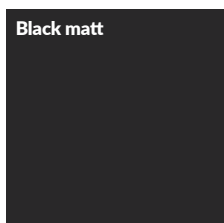
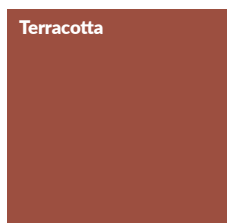
STANDARD COLOURS

Ultra UV-resistant super durable powder coating (> 80µm)

Terracotta

Anthracite

Black matt





IKO Metals Europe NV
Michielenweg 3,
3700 Tongeren, Belgium
T: +32 12 24 18 01
E: office@decraroofs.eu
www.decraroofs.eu